

Virtual Screening of *Kaempferia galanga* L. Bioactive Compounds as HPV-16 Antiviral Mechanism Through E6 Inhibitor Activity

Received 06 May 2022,
Accepted 07 June 2022,

DOI: 10.24036/sainstek/vol1-
iss01/3

Muhammad Badrut Tamam^{1*}, Sin War Naw², Md. Emdad Ullah³, Rasyadan Taufiq Probojati^{4,5}, Ahmad Affan Ali Murtadlo⁵, Dora Dayu Rahma Turista⁶

¹Department of Biology, Faculty of Sciences and Technology, Universitas Muhammadiyah Lamongan, Lamongan, Indonesia

²Department of Chemistry, Myitkyina University, Myitkyina, Myanmar

³Department of Chemistry, Mississippi State University, Mississippi State, United States

⁴Department of Agrotechnology, Faculty of Agriculture, Universitas Kadiri, Kediri, Indonesia

⁵Computational Virology Research Unit, Division of Molecular Biology and Genetics, Generasi Biology Indonesia Foundation, Gresik, Indonesia

⁶Educational Biology Department, Faculty of Teacher Training and Education, Mulawarman University, Samarinda, Indonesia

*Corresponding Author: mh.badruttamam@gmail.com

ABSTRACT

Human papillomavirus (HPV) infection is caused by a virus with a type of DNA genetic material from the Papillomaviridae family, about 90% of HPV infections have no definite symptoms. HPV infection is spread through sexual intercourse, multiple sexual partners, anal sex, and from mother to child during pregnancy. HPV has oncoproteins E6 & E7 which affect the ability to trigger cancer cases. The role of E6 is very crucial and is able to cause cells to lose homeostasis in the cell cycle and transform into cancer, this shows that E6 has the potential to be a binding target for HPV drug candidate compounds. *Kaempferia galanga* L. is used as a cooking spice in Indonesia and known as kencur, this plant is often used by Javanese and Balinese people to make jamoe. The potential of *Kaempferia galanga* L. as an antiviral only has little scientific evidence as previously done, the plant has high protease inhibitory activity of HIV-1 and HCV viruses. This study aims to identify chemical compounds from *Kaempferia galanga* L. which have potential as HPV antivirals through inhibition of E6 activity. Chemical compounds from *Kaempferia galanga* L. are predicted to be antiviral candidates through the activity of Ethyl cinnamate and γ -Cadinene with an E6 inhibition mechanism in the Val69 & Leu57 domains, the results of this study must be further analyzed through a wetlab approach to strengthen scientific evidence.

Keywords: Antiviral, Bioinformatics, *Curcuma longa*, HPV

INTRODUCTION

† Footnotes relating to the title and/or authors should appear here.

Electronic Supplementary Information (ESI) available: [details of any supplementary information available should be included here]. See DOI: 10.24036/sainstek/vol1-iss01/3

Human papillomavirus (HPV) infection is caused by a virus with a type of DNA genetic material from the Papillomaviridae family, about 90% of HPV infections have no definite symptoms. Some cases of infection only trigger the formation of warts which have an effect on increasing the risk of cancer

such as cervix, vagina, vulva, penis, mouth, and anus¹. Cancer cases in the cervix are caused by HPV-16 and HPV-18 with a percentage reaching 70%, but in cases of genital warts it is caused by infection with HPV-6 and HPV-11. HPV infection is spread through sexual intercourse, multiple sexual partners, anal sex, and from mother to child during pregnancy. The HPV vaccine has been found to prevent infection but not everyone gets it because of the high cost².

The host cell of HPV is a stratified epithelium, the process of viral infection is slow because it takes about 12-24 hours for transcription initiation, this may occur due to antibody defenses on the cell surface³. HPV lesions originate from the basal layer of keratinocytes, HPV enters the host cell through receptors such as integrins, annexin A2, and laminins, these receptors can trigger the process of transporting viral molecules to the nucleus by an unknown mechanism. HPV has oncoproteins E6 & E7 which affect the ability to trigger cancer cases. E6 binds to p53 to initiate the process of immortalization in these cells, then E7 binds to pRb to stop the process of checking points in cells. The role of E6 is very crucial and is able to cause cells to lose homeostasis in the cell cycle and transform into cancer, this shows that E6 has the potential to be a binding target for HPV drug candidate compounds⁴.

Kaempferia galanga L. is used as a cooking spice in Indonesia and known as kencur, this plant is often used by Javanese and Balinese people to make jamoe⁵. Chemical compounds in the rhizome *Kaempferia galanga* L. consist of α -Pinene, Camphene, δ -Carene, 1,8-Cineole, Borneol, Ethyl cinnamate, γ -Cadinene, and Linoleoyl chloride. *Kaempferia galanga* L. has health benefits such as anti-inflammatory, anti-oxidant, anti-bacterial, anti-tumorous, anti-angiogenesis⁵. The potential of *Kaempferia galanga* L. as an antiviral only has little scientific evidence as previously done, the plant has high protease inhibitory activity of HIV-1 and HCV viruses^{6,7}. This study aims to identify chemical compounds from *Kaempferia galanga* L. which have

potential as HPV antivirals through inhibition of E6 activity.

METHODS

Sample retrieval

Kaempferia galanga L. contains chemical compounds consisting of -Pinene, Camphene, δ -Carene, 1,8-Cineole, Borneol, Ethyl cinnamate, γ -Cadinene, and Linoleoyl chloride⁵. PubChem (<https://pubchem.ncbi.nlm.nih.gov/>) was used to extract CID, canonical SMILE, molecular formula, and 3D structure of the target compound. The ligand minimization process is carried out on the target compound that has been isolated from the database through OpenBabel 3.1.1 software, it aims to change the *sdf* format to *pdb*^{8,9}. The RCSB PDB (<https://www.rcsb.org/>) in this study was used for sampling E6 HPV-16 (PDB ID: 4XR8).

Bioactivity Prediction

Kaempferia galanga L. compound must have activity as an inhibitor of the E6 protein on HPV-16, the activity was predicted through Molinspiration v2018.03 (<https://www.molinspiration.com/cgi-bin/properties>) with Canonical SMILE. The prediction refers to the positive value of the probability to show the level of activity in the target compound^{10,11}.

Blind Docking Simulation

Docking indicates the level of activity of a ligand when interacting with the target protein domain according to the research objective. The blind docking method in this study aims to determine the level of activity of the *Kaempferia galanga* L. Autogrid compound directed at the entire target surface because the functional site on the protein domain has not been identified. The blind docking simulation was carried out through the Vina Wizard on the PyRx 0.8 software^{12,13}.

Ligand-protein Interaction

The chemical bond interactions in the docking complex were identified through the Discovery Studio 2016 version. The binding position of the compound containing *Kaempferia galanga* L. in the

E6 HPV-16 domain was determined to determine the similarity of the interactions, then the types of chemical bonds displayed by the Discovery Studio 2016 version were conventional hydrogen bonds, pi-alkyl, hydrophobic, Van der Waals, and electrostatic^{14,15}.

Structural Visualization

3D structures are displayed through PyMol 2.5 version, models are displayed through transparent surfaces, cartoons, and a selection of coloring based on structures. 3D visualization makes it possible to identify the location of the binding position of the ligand in the protein domain with a representative view^{16,17}.

RESULT AND DISCUSSION

Kaempferia galanga L. compound bioactivity

Kaempferia galanga L. has chemical compounds consisting of α -Pinene, Camphene, δ -Carene, 1,8-Cineole, Borneol, Ethyl cinnamate, γ -Cadinene, and Linoleoyl chloride which have anti-inflammatory, anti-oxidant, anti-inflammatory properties. anti-bacteria, anti-tumorous, anti-angiogenesis^{19,20,21}. The potential of *Kaempferia galanga* L. as an antiviral only has little scientific evidence as previously done, the plant has high protease inhibitory activity of HIV-1 and HCV viruses^{22,23}. This study aims to identify chemical compounds from *Kaempferia galanga* L. which have potential as HPV antivirals through inhibition of E6 activity. Information on chemical compounds of *Kaempferia galanga* L. such as CID, formula, and Canonical SMILE was obtained from the PubChem database (Table 1).

Table 1. Chemical compounds of *Kaempferia galanga* L. from PubChem Database

Compounds	CID	Formula	SMILE Canonical
α -Pinene	6654	C ₁₀ H ₁₆	CC1=CCC2CC1C2(C)C
Camphene	6616	C ₁₀ H ₁₆	CC1(C2CCC(C2)C1=C)C
δ -Carene	26049	C ₁₀ H ₁₆	CC1=CCC2C(C1)C2(C)C
1,8-Cineole	2758	C ₁₀ H ₁₈ O	CC1(C2CCC(O1)(CC2)C)C
Borneol	64685	C ₁₀ H ₁₈ O	CC1(C2CCC1(C(C2)O)C)C
Ethyl cinnamate	637758	C ₁₁ H ₁₂ O ₂	CCOC(=O)C=CC1=CC=CC=C1
γ -Cadinene	92313	C ₁₅ H ₂₄	CC1=CC2C(CC1)C(=C)CCC2C(C)C
Linoleoyl chloride	9817754	C ₁₈ H ₃₁ ClO	CCCCC=CCC=CCCCCCCC(=O)Cl

Prediction of compound bioactivity in *Kaempferia galanga* L was identified for the determination of compounds with inhibitory properties, the results of this study showed that α -Pinene, δ -Carene, Borneol, Ethyl cinnamate, γ -Cadinene, and

Linoleoyl chloride were predicted as inhibitors and Camphene & 1,8-Cineole as a modulator (Table 2). Inhibitor compounds will be used for further analysis because it is predicted to inhibit E6 activity^{24,25}.

Table 2. The result of compound bioactivity

Compounds	GPCR Lingand	ICM	KI	NRL	PI	EI	Bioactivity Type
α -Pinene	-0.48	-0.43	-1.50	-0.62	-0.85	-0.34	Inhibitor
Camphene	-1.02	-0.55	-1.85	-1.15	-1.40	-0.82	Modulator
δ -Carene	-1.29	-0.79	-1.51	-1.30	-1.28	-0.53	Inhibitor
1,8-Cineole	-0.93	0.01	-1.60	-1.07	-0.90	-0.15	Modulator
Borneol	-0.47	-0.51	-1.57	-0.84	-0.80	-0.23	Inhibitor
Ethyl cinnamate	-0.88	-0.46	-1.09	-0.58	-0.94	-0.45	Inhibitor

γ -Cadinene	-0.21	0.11	-0.80	-0.27	-0.73	0.27	Inhibitor
Linoleoyl chloride	0.11	0.07	-0.12	0.06	-0.07	0.18	Inhibitor

ICM: Ion channel modulator, KI: Kinase inhibitor, NRL: Nuclear receptor ligand, PI: Protease inhibitor, EI: Enzyme inhibitor

The comparison of *Kaempferia galanga* L. compound binding affinity

Molecular interaction simulation through 3D structure with bioinformatics approach is molecular docking²⁶. This simulation aims to identify the chemical bonding activity of ligands in protein-specific domains²⁷. This study used ligands consisting of α -Pinene, δ -Carene, Borneol, Ethyl

cinnamate, γ -Cadinene, & Linoleoyl chloride and E6 as targets. The docking results showed that Ethyl cinnamate and γ -Cadinene had the most negative binding affinity (Table 3). 3D visualization of the two compounds was carried out through cartoon structures, surfaces, and sticks (Figure 1). Thus, Ethyl cinnamate and γ -Cadinene compounds from *Kaempferia galanga* L. are predicted to act as potential inhibitors of E6 activity because they have a more negative binding affinity.

Table 3. Binding affinity comparison

Compounds	CID	Target	Binding Affinity (kcal/mol)
α -Pinene	6654	E6 HPV-16	-5.4
δ -Carene	26049	E6 HPV-16	-5.1
Borneol	64685	E6 HPV-16	-5.5
Ethyl cinnamate	637758	E6 HPV-16	-6.3
γ -Cadinene	92313	E6 HPV-16	-6.3
Linoleoyl chloride	9817754	E6 HPV-16	-5.3

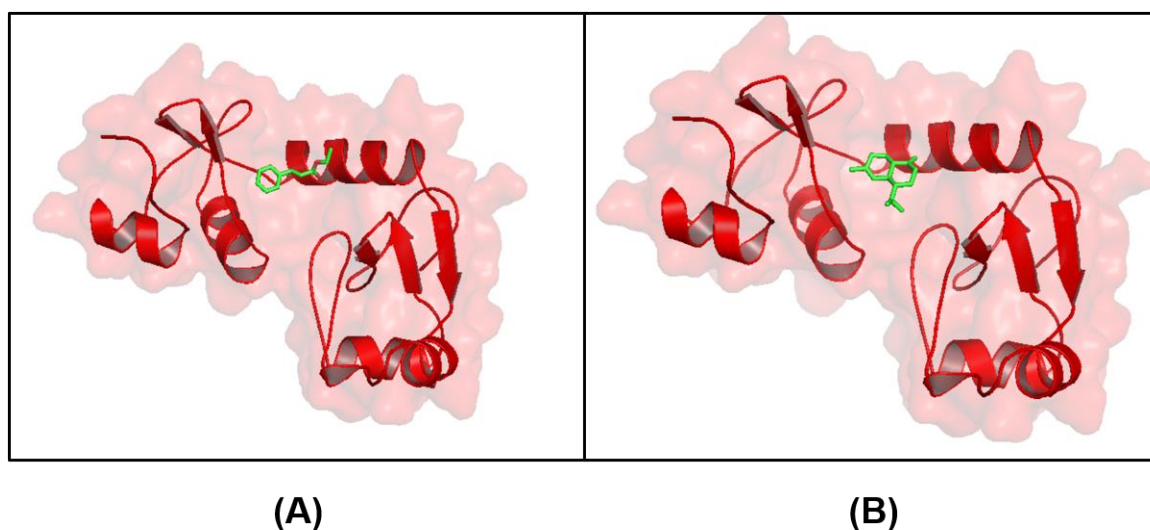


Figure 1. Molecular visualization of 3D docking result. (A) Ethyl cinnamate_E6 (B) γ -Cadinene_E6

Molecular interaction on E6 protein domain

Chemical interactions are formed in molecular complexes from the docking results, these interactions play a role in triggering biological responses such as activation and inhibition of target proteins²⁸. These types of bonds are hydrogen, van der Waals, alkyl, hydrophobic, and electrostatic²⁹.

The similarity of the interaction positions on the ligands can be used to recommend potential sites in proteins. Ethyl cinnamate and γ -Cadinene have similar interactions in the E6 domain consisting of Val69 & Leu57, the two ligands can form hydrogen and alkyl bond interactions to trigger an E6 inhibitory response (Figure 2).

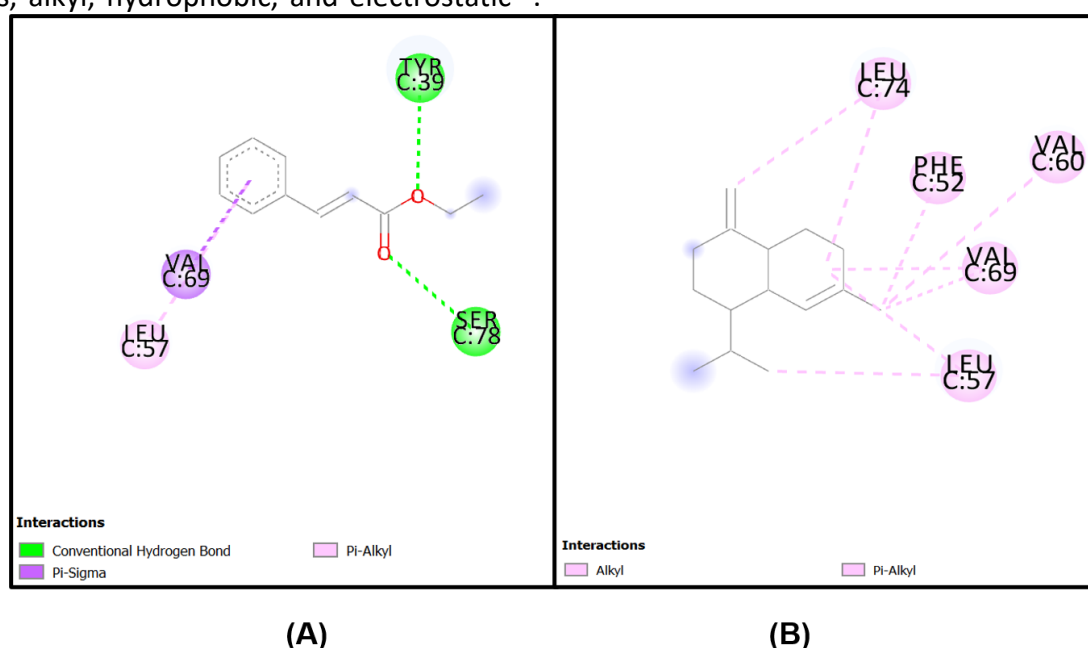


Figure 2. Visualization of 2D molecular interaction analysis results. (A) Ethyl cinnamate_E6 (B) γ -Cadinene_E6.

CONCLUSION

Chemical compounds from *Kaempferia galanga* L. are predicted to be antiviral candidates through the activity of Ethyl cinnamate and γ -Cadinene with an E6 inhibition mechanism in the Val69 & Leu57 domains, the results of this study must be further analyzed through a wetlab approach to strengthen scientific evidence.

REFERENCES

1. Liu Y, Pan Y, Gao W, Ke Y, Lu Z. Whole-Genome Analysis of Human Papillomavirus Types 16, 18, and 58 Isolated from Cervical Precancer and Cancer Samples in Chinese Women. *Sci Rep.* 2017; 7(1): 263. doi: 10.1038/s41598-017-00364-9.
2. Hirose Y, Onuki M, Tenjimbayashi Y, Yamaguchi-Naka M, Mori S, Tasaka N, Satoh T, Morisada T, Iwata T, Kiyono T, Mimura T, Sekizawa A, Matsumoto K, Kukimoto I. Whole-Genome Analysis of Human Papillomavirus Type 16 Prevalent in Japanese Women with or without Cervical Lesions. *Viruses.* 2019; 11(4):350. doi: 10.3390/v11040350.
3. Chen Z, Schiffman M, Herrero R, DeSalle R, Anastos K, Segondy M, Sahasrabudhe VV, Gravitt PE, Hsing AW, Chan PKS, Burk RD. Classification and evolution of human papillomavirus genome variants: Alpha-5 (HPV26, 51, 69, 82), Alpha-6 (HPV30, 53, 56, 66), Alpha-11 (HPV34, 73), Alpha-13 (HPV54) and Alpha-3 (HPV61). *Virology.* 2018; 516:86-101. doi: 10.1016/j.virol.2018.01.002.

4. Travé G, Zanier K. HPV-mediated inactivation of tumor suppressor p53. *Cell Cycle*. 2016; 15(17):2231-2. doi: 10.1080/15384101.2016.1191257.
5. Elshamy AI, Mohamed TA, Essa AF, Abd-ElGawad AM, Alqahtani AS, Shahat AA, Yoneyama T, Farrag ARH, Noji M, El-Seedi HR, Umeyama A, Paré PW, Hegazy MF. Recent Advances in Kaempferia Phytochemistry and Biological Activity: A Comprehensive Review. *Nutrients*. 2019; 11(10): 2396. doi: 10.3390/nu11102396.
6. Wang SY, Zhao H, Xu HT, Han XD, Wu YS, Xu FF, Yang XB, Göransson U, Liu B. Kaempferia galanga L.: Progresses in Phytochemistry, Pharmacology, Toxicology and Ethnomedicinal Uses. *Front Pharmacol*. 2021; 12:675350. doi: 10.3389/fphar.2021.675350.
7. Sookkongwaree K, Geitmann M, Roengsumran S, Petsom A, Danielson UH. Inhibition of viral proteases by Zingiberaceae extracts and flavones isolated from Kaempferia parviflora. *Pharmazie*. 2006; 61(8): 717-21.
8. Ansori ANM, Fadholly A, Hayaza S, Susilo RJK, Inayatillah B, Winarni D, Husen SA. A Review on Medicinal Properties of Mangosteen (*Garcinia mangostana* L.). *Res J Pharm Technol*. 2020; 13(2):974-982. doi: 10.5958/0974-360X.2020.00182.1.
9. Husen SA, Wahyuningsih SPA, Ansori ANM, Hayaza S, Susilo RJK, Winarni D, Punnapayak H, Darmanto W. Antioxidant Potency of Okra (*Abelmoschus esculentus* Moench) Pods Extract on SOD Level and Tissue Glucose Tolerance in Diabetic Mice. *Res J Pharm Technol*. 12(12): 5683. doi: 10.5958/0974-360X.2019.00983.1.
10. Husen SA, Setyawan MF, Syadzha MF, Susilo RJK, Hayaza S, Ansori ANM, Alamsjah MA, Ilmi ZN, Wulandari PAC, Pudjiastuti P, Awang P, Winarni D. A Novel Therapeutic effects of Sargassum ilicifolium Alginate and Okra (*Abelmoschus esculentus*) Pods extracts on Open wound healing process in Diabetic Mice. *Research J. Pharm. and Tech* 2020; 13(6): 2764-2770. doi: 10.5958/0974-360X.2020.00491.6.
11. Kharisma VD, Kharisma SD, Ansori ANM, Kurniawan HP, Witaningrum AM, Fadholly A, Tacharina MR. Antiretroviral Effect Simulation from Black Tea (*Camellia sinensis*) via Dual Inhibitors Mechanism in HIV-1 and its Social Perspective in Indonesia. *Res J Pharm Technol*. 2021; 14(1): 455-460. doi: 10.5958/0974-360X.2021.00083.4.
12. Fadholly A, Ansori ANM, Kharisma VD, Rahmahani J, Tacharina MR. Immunobioinformatics of Rabies Virus in Various Countries of Asia: Glycoprotein Gene. *Res J Pharm Technol*. 2021; 14(2): 883-886. doi: 10.5958/0974-360X.2021.00157.8.
13. Ansori ANM, Fadholly A, Proboningrat A, Hayaza S, Susilo RJK, Naw SW, Posa GAV, Yusrizal YF, Sibero MT, Sucipto TH, Soegijanto S. In vitro antiviral activity of Pinus merkusii (Pinaceae) stem bark and cone against dengue virus type-2 (DENV-2). *Res J Pharm Technol*. 2021; 14(7):3705-8. doi: 10.52711/0974-360X.2021.00641.
14. Ansori ANM, Kharisma VD, Fadholly A, Tacharina MR, Antonius Y, Parikesit AA. Severe Acute Respiratory Syndrome Coronavirus-2 Emergence and Its Treatment with Alternative Medicines: A Review. *Res J Pharm Technol*. 2021; 14(10):5551-7. doi: 10.52711/0974-360X.2021.00967
15. Husen SA, Ansori ANM, Hayaza S, Susilo RJK, Zuraidah AA, Winarni D, Punnapayak H, Darmanto W. Therapeutic Effect of Okra (*Abelmoschus esculentus* Moench) Pods Extract on Streptozotocin-Induced Type-2 Diabetic Mice. *Res J Pharm Technol*. 2019; 12(8):3703-3708. doi: 10.5958/0974-360X.2019.00633.4.
16. Ansori ANM, Kharisma VD, Solikhah TI. Medicinal properties of *Muntingia calabura* L.: A Review. *Res J Pharm Technol*. 2021; 14(8):4509-2. doi: 10.52711/0974-360X.2021.00784.
17. Proboningrat A, Kharisma VD, Ansori ANM, Rahmawati R, Fadholly A, Posa GAV, Sudjarwo SA, Rantam FA, Achmad AB. In silico Study of Natural inhibitors for Human papillomavirus-18 E6 protein. *Res J Pharm Technol*. 2022;

- 15(3):1251-6. doi: 10.52711/0974-360X.2022.00209.
18. Fahmi M, Kharisma VD, Ansori ANM, M Ito. Retrieval and Investigation of Data on SARS-CoV-2 and COVID-19 Using Bioinformatics Approach. *Adv Exp Med Biol.* 2021; 1318: 839-857. doi: 10.1007/978-3-030-63761-3_47.
 19. Kharisma VD, Agatha A, Ansori ANM, Widyananda MH, Rizky WC, Dings TGA, Derkho M, Lykasova I, Antonius Y, Rosadi I, Zainul R. Herbal combination from *Moringa oleifera* Lam. and *Curcuma longa* L. as SARS-CoV-2 antiviral via dual inhibitor pathway: A viroinformatics approach. *J Pharm Pharmacogn Res.* 2022; 10(1): 138-146.
 20. Luqman A, Kharisma VD, Ruiz RA, Götz F. In Silico and in Vitro Study of Trace Amines (TA) and Dopamine (DOP) Interaction with Human Alpha 1-Adrenergic Receptor and the Bacterial Adrenergic Receptor QseC. *Cell Physiol Biochem.* 2020; 54: 888-898. doi: 10.33594/000000276.
 21. Nugraha AP, Rahmadhani D, Puspitaningrum MS, Rizqianti Y, Kharisma VD, Ernawati DS. Molecular docking of anthocyanins and ternatin in *Clitoria ternatea* as coronavirus disease oral manifestation therapy. *J Adv Pharm Technol Res.* 2021; 12 (4): 362-367. doi: 10.4103/japtr.japtr_126_21.
 22. Wijaya RM, Hafidzhah MA, Kharisma VD, Ansori ANM, Parikesit AA. COVID-19 In Silico Drug with *Zingiber officinale* Natural Product Compound Library Targeting the Mpro Protein. *Makara J Sci.* 2021; 25(3): 162-171. doi: 10.7454/mss.v25i3.1244.
 23. Prahasanti C, Nugraha AP, Kharisma VD, Ansori ANM, Devijanti R, Ridwan TPSP, Ramadhani NF, Narmada IB, Ardani IGAW, Noor TNEBA. A bioinformatic approach of hydroxyapatite and polymethylmethacrylate composite exploration as dental implant biomaterial. *J Pharm & Pharmacogn Res.* 2021; 9(5): 746-754.
 24. Susanto H, Kharisma VD, Listyorini D, Taufiq A. Effectivity of Black Tea Polyphenol in Adipogenesis Related IGF-1 and Its Receptor Pathway Through In Silico Based Study. *J Phys Conf Ser.* 2019; 1093 (1): 012037.
 25. Ansori ANM, Kharisma VD, Parikesit AA, Dian FA, Probojati RT, Rebezov M, Scherbakov P, Burkov P, Zhdanova G, Mikhalev A, Antonius Y, Pratama MRF, Sumantri NI, Sucipto TH, Zainul R. Bioactive Compounds from Mangosteen (*Gracinia mangostana* L.) as an Antiviral Agent via Dual Inhibitor Mechanism against SARS-CoV-2: An In Silico Approach. *Pharmacogn J.* 2022; 14(1): 85-90. doi: 10.5530/pj.2022.14.12.
 26. Dibha AF, Wahyuningsih S, Kharisma VD, Ansori ANM, Widyananda, MH, Parikesit AA, Rebezov M, Matrosova Y, Artyukhova S, Kenijz N, Kiseleva M, Jakhmola V, Zainul R. Biological activity of kencur (*Kaempferia galanga* L.) against SARS-CoV-2 main protease: In silico study. *Int J Health Sci.* 2022; 6(S1): 468-480. doi: 10.53730/ijhs.v6nS1.4779.
 27. Ramadhani NF, Nugraha AP, Rahmadhani D, Puspitaningrum MS, Rizqianti Y, Kharisma VD, Noor TNEBTA, Ridwan RD, Ernawati DS, Nugraha AP. Anthocyanin, tartaric acid, ascorbic acid of roselle flower (*Hibiscus sabdariffa* L.) for immunomodulatory adjuvant therapy in oral manifestation coronavirus disease-19: An immunoinformatic approach. *J Pharm Pharmacogn Res.* 2022; 10(3): 418-428.
 28. Hartati FK, Djauhari AB, Kharisma VD. Evaluation of Pharmacokinetic Properties, Toxicity, and Bioactive Cytotoxic Activity of Black Rice (*Oryza sativa* L.) as Candidates for Diabetes Mellitus Drugs by in silico. *Biointerface Res App Chem.* 2021; 11(4): 12301-12311. doi: 10.33263/BRIAC114.1230112311.
 29. Kharisma VD, Ansori ANM, Fadholly A, Sucipto TH. Molecular Mechanism of Caffeine-Aspirin Interaction in Kopi Balur 1 as Anti-Inflammatory Agent: A Computational Study. *Indian J Forensic Med Tox.* 2020; 14(4): 4041-4046.